

CBRB-24 24" Wide Gas Radiant Broiler

MODEL: CBRB-24

DESCRIPTION: 24" WIDE GAS RADIANT BROILER

TOTAL BTU/HR: 60,000

PACKING SIZE (IN): 28"x30"x20"

N/W (LB): 119

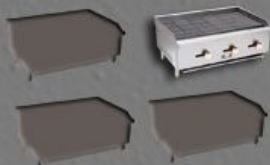
G/W (LB): 154

FEATURES

- STAINLESS STEEL FRONT W/ GALVANIZED SIDES
- STEEL U-SHAPE BURNER (30,000 BTU/HR EACH)
 - TO BE CONTROLLED EVERY 12"
- HOT ROLLED STEEL RADIANT COVER W/ CAST IRON GRATE
- STANDBY S/S PILOT FOR EASY START
 - ADJUSTABLE HEAVY DUTY LEGS
- GREASE TROUGH CHANNEL IN THE FRONT
- STAINLESS STEEL OIL COLLECTOR IN THE BOTTOM
 - STAINLESS STEEL SPLASH GUARD ON
 - 3 SIDES DURABLE BRASS CONTROL VALVE
- EASY ACCESS TO PILOT VALVE ADJUSTMENT SCREWS
 - EASY GAS CONVERSION IN THE FIELD
 - 3/4" NPT REAR GAS CONNECTION
 - SHIPPED WITH GAS REGULATOR
 - GAS CONVERSION KITS INCLUDED
- ONE YEAR LIMITED PARTS AND LABOR WARRANTY

IMAGE
COMING
SOON

OTHER MODELS AVAILABLE



Installation Instructions

1. A GAS PRESSURE REGULATOR SUPPLIED WITH THE UNIT MUST BE INSTALLED. NATURAL GAS 4.0" (102 MM) W.C. PROPANE GAS 10.0" (254 MM) W.C.
2. AN ADEQUATE VENTILATION SYSTEM IS REQUIRED FOR COMMERCIAL COOKING EQUIPMENT.
3. THESE UNITS ARE MANUFACTURED FOR INSTALLATION IN ACCORDANCE WITH NATIONAL FUEL GAS CODE, ANSI- Z223.1/NFPA #54 (LATEST EDITION).
4. THIS APPLIANCE IS INTENDED FOR COMMERCIAL INSTALLATION ONLY AND IS NOT INTENDED FOR HOME USE.
5. EQUIPMENT CLEARANCE REQUIREMENT:

NON-COMBUSTIBLES	COMBUSTIBLES
SIDES 0"	SIDES 4"
BACK 0"	BACK 4"
6. ALL THE INSTALLATION MUST BE PERFORMED BY QUALIFIED TECHNICIANS.
7. FOR GAS CONVERSION, PLEASE REFER TO CONVERSION INSTRUCTIONS IN THE INSTRUCTION MANUAL BOOK.

