



AGBB-59 2 GLASS DOOR BACK BAR

INCLUDE 3 YEAR PARTS + LABOR / 5 YEAR COMPRESSOR WARRANTY

Dimensions

| | |
|------------------------------|-----------------------|
| Exterior Dimensions (WxDxH) | 59.05" x 26.30" x 37" |
| Interior Dimensions (WxDxH) | |
| Capacity (cu. ft.) | 19.4 cu. ft. |
| Weight | 236 lbs |
| Packaging Dimensions (WxDxH) | |

Construction

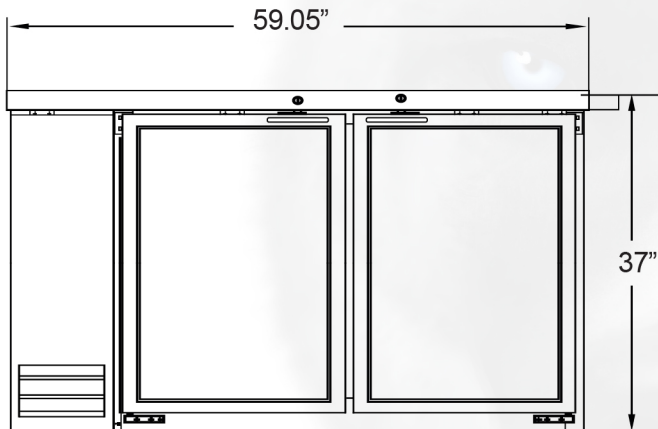
| | |
|---------------------|---|
| Exterior Material | EGI(Electro Galvanized Iron) + Black Embossed Painting |
| Interior Material | Galvalume |
| Insulation Material | Cyclopentane |
| Shelf Material | SWRM-B + PE Coating |
| Shelf Load Capacity | 132 lbs/EA |
| # Shelves | 4 |

Cooling

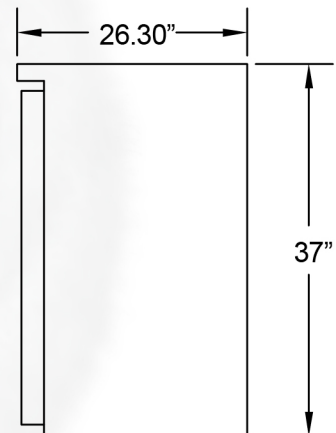
| | |
|------------------------|--------------------|
| Temperature Range | 32° - 41° F |
| Refrigerant | R290 |
| Maximum Ambient | 95° F |
| Temperature Rating | N Class |
| Defrosting | Automatic |
| Temperature Display | Analog Thermometer |
| Temperature Controller | Thermostat |
| H/P | 3/8 |

Electrical

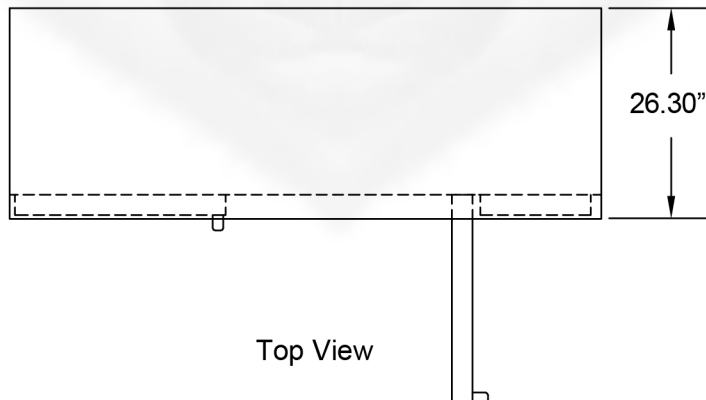
| | |
|---------|------|
| Voltage | 115 |
| Amps | 3.5A |
| Hz | 60 |
| Phase | 1 |



Front View



Side View



Top View

